

Kelvin Smith Library 3M SelfCheckout Data 2006-07

Items By Day Of The Week (By Type)

Date Range : 7/1/2006 - 6/30/2007 | Machine : HP34892134618

	Other	Undefined N	Total
Sunday	47	1,217	1,264
Monday	91	1,839	1,930
Tuesday	84	2,040	2,124
Wednesday	72	1,838	1,910
Thursday	59	1,607	1,666
Friday	95	1,542	1,637
Saturday	59	1,268	1,327
Total	507	11,351	11,858

KSL 3M SelfCheckout Usage Patterns By Day of Week

Ranked by Activity:

Tuesday 2,124
Monday 1,930
Wednesday 1,910

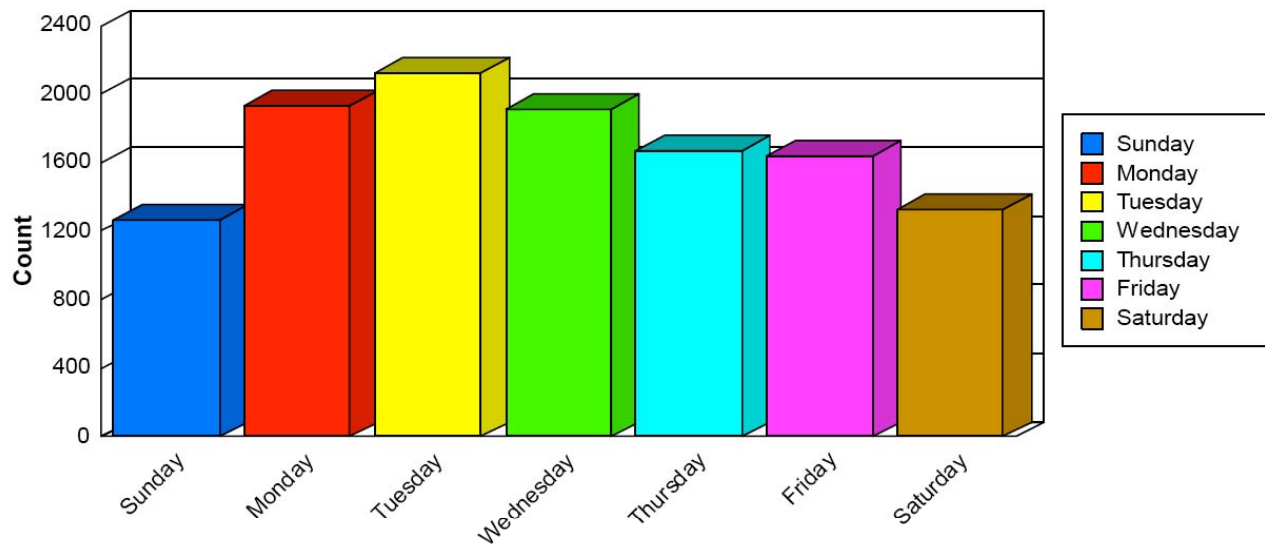
Thursday 1,666
Friday 1,637

Saturday 1,327
Sunday 1,264

Kelvin Smith Library 3M SelfCheckout

Items By Day Of The Week

Date Range : 7/1/2006 - 6/30/2007 | Machine : HP34892134618



KSL 3M SelfCheckout Usage Patterns 2006-2007

- Tuesday, Monday, Wednesday are peak days; followed by Thursday & Friday
- SelfCheckout is used all days of the week

Kelvin Smith Library 3M SelfCheckout 2006-07

Items By Hour Of The Day (By Status)

Date Range : 7/1/2006 - 6/30/2007 | Machine : HP34892134618

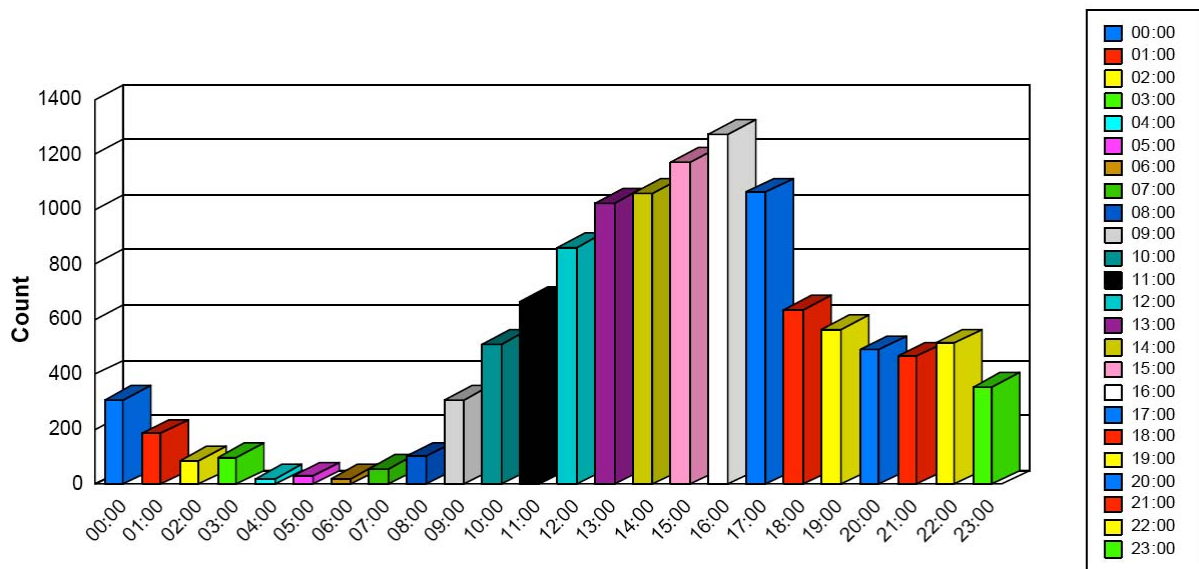
	Issue Refused	Issued	Total
00:00	25	284	309
01:00	11	173	184
02:00	13	72	85
03:00	5	92	97
04:00	0	22	22
05:00	1	29	30
06:00	0	23	23
07:00	1	54	55
08:00	6	95	101
09:00	9	300	309
10:00	24	486	510
11:00	18	648	666
12:00	30	831	861
13:00	26	998	1,024
14:00	37	1,021	1,058
15:00	40	1,133	1,173
16:00	67	1,207	1,274
17:00	48	1,013	1,061
18:00	21	612	633
19:00	17	546	563
20:00	34	454	488
21:00	24	441	465
22:00	33	480	513
23:00	17	337	354
Total	507	11,351	11,858

Total KSL Items Checked out via SelfCheckout 2006-2007

- Peak Hours Noon-5:00 p.m.; strong activity until 1:00 a.m.
- SelfCheckout is used all hours

Kelvin Smith 3M SelfCheckout 2006-07 Items By Hour Of The Day

Date Range : 7/1/2006 - 6/30/2007 | Machine : HP34892134618



KSL Items Checkout Out via 3M SelfCheckout 2006-07

- **Peak Hours: Noon – 5:00 p.m., with strong activity continuing until 1:00 a.m.**
- **Annual hourly data indicates that SelfCheckout is used all hours, all days**